



- ⦿ Working distance of 500mm
- ⦿ 30x optical zoom
- ⦿ Very fast and responsive auto focus
- ⦿ Compatible with a lot of optical accessories
- ⦿ Laser pointer for precision
- ⦿ Perfect for rework or small items assembly

W30x Freesight 4K

EASY TO USE

Cost effective, plug-and-play and ergonomic video inspection system producing bright pictures for fast and reliable optical inspection. Focusing on the ergonomic and work environment of the user our optical inspection cameras and systems make your daily inspection needs easy, quick and efficient.

HIGH QUALITY OPTICS

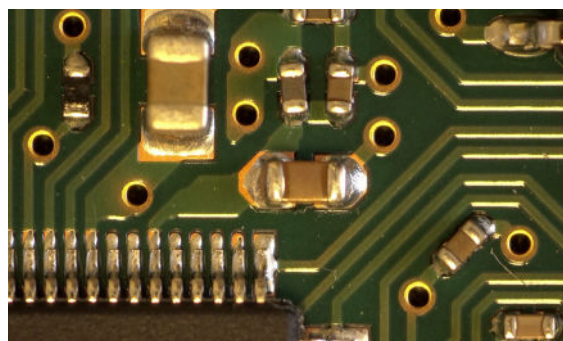
The W30x-4K has a powerful 30x optical zoom, 73 mm to 500 mm working distance range and a swift auto focus for clear examination of your object in 4K resolution (3840x2160).

FULLY FLEXIBLE

Our complete range of products are designed for full modularity. An extensive range of lenses, illumination, software, mounting and stand configurations allows for versatile installation in all working situations.

APPLICATIONS

Electronic production, quality control, jewelry assembly, tooling manufacturing, automotive, aerospace, defense industry, medical production, pathology grossing stations, forensics, life science.



Example images in 4K



W30x Freesight 4K Technical Specification

Image Sensor	1/2.5" CMOS, 8.15 mega pixels
Picture Quality	4K
Output Signal	QFHD: 2160p/29.97, 2160p/25, 2160p/23.98 FHD: 1080p/59.94, 1080p/50, 1080p/29.97 (2-2), 1080p/25 (2-2), 1080i/59.94, 1080i/50"
Optics	20x optical zoom + 10x Super Zoom with auto focus, F1.6 to F14 (F4.7 to F14 at 30x)
Working Distance (w/o Close-up)	~350-500 mm
Working Distance with +2 Close-up	~ 210-245 mm
Working Distance with +5 Close-up	~ 125-140 mm
Working Distance with +10 Close-up	~ 73-80 mm
Field of View at 1x zoom	~ 550x309 mm
Field of View at 10x zoom	~ 56x31.5 mm
Field of View at 20x zoom	~ 18.5x10.4 mm
Field of View at 30x zoom +2 Close-up	9.2x5.2 mm [57x magnification on a 24" monitor]
Field of View at 30x zoom +5 Close-up	~6.9x3.9 mm [75x magnification on a 24" monitor]
Field of View at 30x zoom +10 Close-up	4.4x2.5 mm [118x magnification on a 24" monitor]
Camera Control	Aluminum housing Control unit device with joystick or PC control software via serial COM or USB port
Adjustable Parameters	Optical zoom, Iris, exposure (shutter speed), brightness, focus, white balance (colour), picture freeze, NIR-vision mode, image rotate, negative picture, save & recall, zoom factor display and cross line on live image
Laser Pointer	Red LED laser, 0,5 W output power, Laser class 2
Inputs	DC in and serial RS-232
Outputs	QFHD HDMI 1.4b
Storage Environment	*-20° - +60° C, 20-95% RH, non-condensing
Operating Environment	*0° - +60° C, 20-95% RH, non-condensing
Power Requirement	12 V VDC, 4.0 W max
Weight of camera	950 g