

High Voltage Cable testers

SYNOR 5000R



- ▶ AC/DC dielectric strength test
- ▶ Insulation measurement
- ▶ 2 & 4 wire continuity test
- ▶ Functional test / stimuli
- ▶ Test of components
- ▶ ALL board types can be mixed
- ▶ Stand alone tester
- ▶ Synor 420X series compatibility
- ▶ Ethernet, PLC interfaces, wifi
- ▶ Windows 7 compatible software
- ▶ Multilingual software, free updates available on our web

This high voltage cable tester is ideal for test benches or integration when implemented inside a test system. Working with or without PC, it can easily be controlled and part of any system or project.

Thanks to its .dll libraries and Ethernet communication, it makes the job easy for integrators and sub-contractors. Also, optimize your development with our latest Winpass software platform, and benefit the latest functions with our regular free web updates.

“ Browse our internet pages in order to always benefit our free latest Winpass software functionalities “

TECHNICAL CHARACTERISTICS

CONTINUITY TEST

In order to check the conformity of your cable and connexions (no opens, no shorts, no inversions, no point shifting, ...), the continuity test allows you to test in 2 or 4 wire mode depending on the accuracy and resistance level you are looking at.

In 2 wire mode

- Test voltage 0,1 V to 20 V \pm 5%
- Test current 10 mA to 2 A \pm 1%
- Continuity low limit 1 Ω to 2 k Ω \pm 2%
- Continuity high limit 1 Ω to 2 k Ω \pm 2%
- Test time 1 ms to 99 s \pm 1 ms
- Accuracy \pm 2%

In 4 wire mode

- Test voltage 0,1 V to 20 V \pm 5%
- Test current 10 mA to 2 A \pm 1%
- Continuity low limit 1 m Ω to 2 k Ω
- Continuity high limit 1 m Ω to 2 k Ω
- Test time 1 ms to 99 s \pm 1 ms
- Accuracy \pm 2%

INSULATION TEST

In order to check the quality of your cable and connexions (no scratch, no bended pins, no insulating problems, ...), the insulation test allows you to test in medium or very high resistance depending on your standard requirement or industry you are working in. Typically aerospace, aeronautic or military applications are requiring highest levels of insulation than industrial applications.

- Test voltage 2 VDC to 2121 VDC \pm 5% (depending on the switching card type)
- Insulation limit from 50 k Ω to 5 G Ω
- Accuracy : 50 k Ω to 1 G Ω \pm 5% / 1 G Ω to 3 G Ω \pm 8%
3 G Ω to 56 G Ω \pm 15%
- Short-circuit current : 2 V to 20 V : 40 mA / 20 V to 2120 V : 10 mA
- Rise/fall time 1 ms to 60 s
- Hold time 1 ms to 99 s

DIELECTRIC STRENGTH TEST (HIPOT)

In order to check the quality of your cable and connexions (not respected distance, flashes to earth, no cable scratches, no crushed cable, no bended pins, no insulating problems, ...), the hipot test is more stressy and lets you see additional problems in your cabling. Different voltages will be applied to different cable types (power, audio, bus, network, telecommunication, ...).

✓ In DC

- Voltage 20 V to 5500 VDC (depending on options and switching card type) \pm 5%
- Breakdown current 500 μ A to 10 mA
- Rise/fall time 1 ms to 60 s
- Hold time 1 ms to 99 s

High Voltage Cable testers

SYNOR 5000R

✓ In AC

- Voltage 50 V to 4000 VAC (depending on options and switching card type) $\pm 2\%$
- Breakdown current from 500 μA to 10 mA
- Leakage current measurement 500 μA to 100 mA $\pm 2,5\%$
- Rise/fall time 500 ms to 60 s
- Hold time 20 ms to 99 s

FUNCTIONAL TEST / STIMULI

Once you are sure of the conformity and the quality of your cable, you can then use it for what it is : powering elements, energizing relays, lighting lamps, activating speakers, switches, servos, push buttons, ... You can really make your module, cable, harness, backplane, ... as it should be in real operation. All this is done without disconnecting anything from our harness tester.

- Typical maximum switching voltage : up to 2000 VDC / 1500 VAC
- Typical maximum switching current : up to 10A
- Higher voltage/current parameters are also possible on demand



Example : on this plane control module, once the cabling has been tested in continuity, insulation and high voltage, the user is guided through pictures and messages on the screen to test switches, to check the back light is working ok, to check that switch lights are activated in different positions, to validate that the push switch is good in both positions, ... Thanks to our cable tester, 70 % of manual test time is saved, human mistakes are limited, quality is optimal and traceability automatic

TEST OF COMPONENTS

Diode Measurement



- Test current 10 mA to 2 A
- Voltage limit 100 mV to 20 V $\pm 5\%$
- Voltage measurement $\pm 1\%$

Zener Diode Measurement



- Test voltage 2 VDC to 90 VDC $\pm 5\%$ (depending on the switching card type)
- Short-circuit current :
2 V to 20 V : 10 mA
20 V to 2121 V : 10 mA

Transil, transorb, t.v.s., surge protector measurement



- Test voltage 2 VDC to 2121 VDC $\pm 5\%$ (depending on the switching card type)
- Short-circuit current
2 V to 20 V : 40 mA
20 V to 2121 V : 10 mA
- Breakdown current 500 μA to 10 mA $\pm 10\%$
- Voltage measurement $\pm 5\%$

Resistance Measurement

In 2 wire mode

- Resistance 10 Ω to 10 M Ω $\pm 2\%$
- Test current 1 μA to 10 mA
- Test time from 1 ms to 99 s $\pm 1\text{ms}$

In 4 wire mode



- Resistance 100 m Ω to 10 M Ω $\pm 2\%$
- Test current 1 μA to 10 mA
- Test time from 1 ms to 99 s $\pm 1\text{ms}$

Capacitor Measurement

- Capacity from 100 pF to 10 mF $\pm 20\text{ pF} \pm 5\%$
- Accuracy $\pm 5\% \pm 20\text{pF}$



Shielding, Twisted Pairs

- Shielding 10 pF to 10 μF
- Accuracy $\pm 5\% \pm 10\text{pF}$



High Voltage Cable testers

SYNOR 5000R

OTHER SPECIFICATIONS

Ethernet Interface

- Standard 10/100 Mbit communication with cable tester network



Plc

- 3 inputs at 24VDC, 10 mA / 5 outputs at max. 48VDC / 2 A



0-10V

- 4 floating outputs 0.1VDC to 10 VDC
- Accuracy $\pm 1\% \pm 10\text{mV}$

Remote Control

- 1 input that allows to start a test at distance or validate an action



User Safety

- Double hardware safety loop



External Light



- red/green/yellow light (24VDC, 450mA) :
- RED : test running
- YELLOW : status
- GREEN : test not running

Floating mode

- This mode is dedicated to measure products referenced to ground (typically trains, planes, missiles, ...)

Stand alone mode (black box)

- Stand alone mode ; Synor 5000 harness tester can work without any PC connected (internal memory)



SOFTWARE SPECIFICATIONS



Connected or not to our cable tester, Winpass software automatically switches in simulation or real mode.

Ran under Windows XP or Seven, it complies with the latest market solutions. Every time a new Winpass release is available, you can freely download it from our web site.

What you will gain with our latest Winpass 5000 software platform is :

QUALITY + CONFORMITY + EASE OF USE
+ COMPATIBILITY + TRACEABILITY + PRICE + INTERNATIONAL

QUALITY

BE SURE YOUR CABLE TESTER IS OK

- **Self-test** it automatically checks that the generators and internal measuring equipment are working ok, and that all the relays are working ok ; in case a relay is defective it gives its exact position in the tester in order to replace it as fast as possible
- **Security tag** in order to be sure a user or sub contractor is using the right test file version. Anything modified in a test program can be noticed just by comparing the compilation date tags
- **User level** Each user can get a password in order to access or not the test file edition, modification, execution, ...

CONFORMITY

IMPORT YOUR TEST FILE INTO WINPASS

- **File transformer** the fastest way to create a Winpass test file is to import it from your database. It also guarantees no mistakes are done and automatically create test file, correspondence table and connector library

EASE OF USE

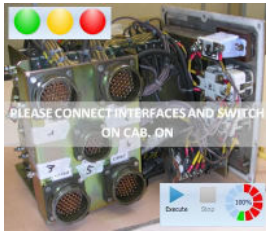
DO NOT WRITE YOUR TEST FILE, LEARN IT

- **Self-learning** an other way to create a Winpass test file is to plug the device under test that will be learned ; test program will be automatically written. If you decide to write it you do not have to be a programmer to do so

High Voltage Cable testers

SYNOR 5000R

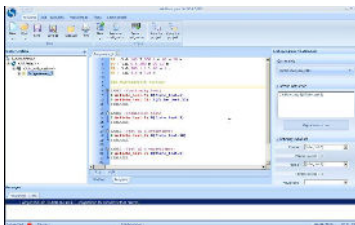
- For production we just show limited information on screen and big in size



EDIT, MODIFY AND TEST EASILY

SWITCH TO BOTH WINDOWS IN A CLICK

- **Graphical and colour editor** it lets you easily identify what you do, where you are and whether your syntax is good or not
- **Edit/Test window** in one click just test what you just wrote by switching from the edit window to the test window



TEST AND DEBUG FAST

- **Automatic test** the automatic test can make a test in between :
 - two points
 - one point against and all other points
 - a group of points and an other group of points
- **Manual test** the manual test can pop up during a test file is ran in order to provide you accurate information for debugging and doing maintenance. It provides you a wide panel of tools (touch probe, oscilloscope) to rapidly identify the mistake on your DUT and where it is



TRACEABILITY

PROVIDE REPORTS TO CUSTOMER

- **Printing test reports** including your logo and company details, it is automatically generated with the information you require, for traceability

TEST AND TRACE RESULTS

- **Result saving** you can save your result locally or on networks, in text files or excel files
- **Statistics** let you evaluate your production feedback for analyse on corrective actions

| Test No. | Labels | Points | Test No. | Labels | Points | Results | Values | Indication |
|----------|--------------------|-----------------------|----------|--------------------|-----------------------|---------|--------|------------|
| 1 | Test de continuité | Continuity resistance | 1 | Test de continuité | Continuity resistance | 0.000 | 0.000 | OK |
| 2 | Test de continuité | Continuity resistance | 2 | Test de continuité | Continuity resistance | 0.000 | 0.000 | OK |
| 3 | Test de continuité | Continuity resistance | 3 | Test de continuité | Continuity resistance | 0.000 | 0.000 | OK |
| 4 | Test de continuité | Continuity resistance | 4 | Test de continuité | Continuity resistance | 0.000 | 0.000 | OK |
| 5 | Test de continuité | Continuity resistance | 5 | Test de continuité | Continuity resistance | 0.000 | 0.000 | OK |
| 6 | Test de continuité | Continuity resistance | 6 | Test de continuité | Continuity resistance | 0.000 | 0.000 | OK |
| 7 | Test de continuité | Continuity resistance | 7 | Test de continuité | Continuity resistance | 0.000 | 0.000 | OK |
| 8 | Test de continuité | Continuity resistance | 8 | Test de continuité | Continuity resistance | 0.000 | 0.000 | OK |
| 9 | Test de continuité | Continuity resistance | 9 | Test de continuité | Continuity resistance | 0.000 | 0.000 | OK |
| 10 | Test de continuité | Continuity resistance | 10 | Test de continuité | Continuity resistance | 0.000 | 0.000 | OK |

PRICE

COST EFFECTIVE AT ALL LEVELS

- **Free software updates** downloadable from our web site, you can enjoy our latest functionalities thank to our latest software releases

INTERNATIONAL

EXPORTABLE SOLUTION

- **Unlimited languages** our open source language pack makes Winpass interface customizable to any language. In addition to German, English, French and Spanish user interface, Winpass accepts any other custom language



High Voltage Cable testers

SYNOR 5000R

GENERAL CHARACTERISTICS

Presentation

- Basic rack for integration into cabinet or test benches
- Metal case
- 19 inches rack

Dimensions

- Height 265 mm
- Width 437 mm
- Depth 485 mm

Weight

- 12kg

Mains

- 115/230VAC $\pm 15\%$, 47...64 Hz
- Consumption 500 VA

Operating temperature & humidity

- 0°C to +45°C Up to 90% RH

Storage temperature

- -10°C to +60° C

Over-voltage category

- CATII

Pollution degree

- 2

Safety class

- Class I (earth protection)

Output connector type

- Female 64 points DIN41612 or any other customized type



SWITCHING CARD TYPE

SWITCHING CARDS

Those cards are mostly dedicated to test sub-assemblies for conformity

SY5000-M128A5A

500 VDC (if option SY5000-HVDC) / 350 VAC (if option SY5000-HVAC) / 2A switching card - 128 points



SY5000-M128A10

1000 VDC (if option SY5000-HVDC) / 750 VAC (if option SY5000-HVAC) / 2A switching card - 64 points



SY5000-M64A15

1500 VDC (if option SY5000-HVDC) / 1000 VAC / 2A switching card - 64 points



SY5000-M64A20A

2121 VDC (if option SY5000-HVDC) / 1500 VAC (if option SY5000-HVAC) / 2A switching card - 64 points

SY5000-M22A20

2000 VDC (if option SY5000-HVDC) / 1500 VAC (if option SY5000-HVAC) / 10A stimuli card - 22 points



SY5000-M32A30

3000 VDC / 2000 VAC / 2A switching card - 32 points ; requires SY5000-XS-VHV option + a XS equipment



SY5000-M24A42

4200 VDC / 3000 VAC / 2A switching card - 24 points ; requires SY5000-XS-VHV option + a XS equipment



SY5000-M8A55

5500 VDC / 4000 VAC / 2A switching card - 8 points ; requires SY5000-XS-VHV option + a XS equipment



SY5000-EXS

6000 VDC / 5000 VAC (if option SY5000-HVG) / 40A switching card - 4, 8, 12 or 16 points



STIMULI CARDS

Those cards are mostly dedicated to activate components (lights, engines, ...), energise relays, check switches and functionalities of systems

SY5000-S22A20

2000 VDC / 1500 VAC (if option SY5000-HVAC) / 10A stimuli card - 22 points



MIXED STIMULI/SWITCHING CARDS

SY5000-MS32A20

2000 VDC / 1500 VAC / 2A stimuli card - 32 channels + common. 2 variable power supplies can be driven independently

High Voltage Cable testers

SYNOR 5000R

OPTIONS

SY5000-HVAC

High voltage AC dielectric strength tester at 1500 VAC
50 Hz / 60 Hz

SY5000-HVDC

High voltage DC dielectric strength tester + insulation
meter at 2120VDC

SY5000-FLT

Floating continuity measurement;
dedicated to measure products
referenced to ground (typically trains,
planes, ...)

SY5000-STDA

Stand alone mode ; Synor 5000 harness tester can
work without any PC connected (internal memory)

SY5000-OUT10V

0-10V analog outputs (4 outputs available)



SY5000-STI

Stimuli power supply input

SY5000-AUX

Auxiliary input for T&M equipment such as MGR10, XS
series, ... has to be ordered with the associated cables
(ref. SY5000-MGR10, SY5000-M1501P, SY5000-XS,
SY5000-XSVHV)



SY5000-XS-VHV

I/O connexion for XS equipment ($U > 2000\text{VDC}$ /
 1500VAC), including connexion cables

PDZA series

Wide range of simple or double power supplies for
stimuli option, fully driven by our software platform



SY5000-MGR10

VERY LOW RESISTANCE OPTION

(able to measure below $100\ \mu\Omega$, up to 10 A depending on
the switching card type) ; to be ordered with ref. SY5000-
MGR10



SY5000-M1501

VERY HIGH RESISTANCE OPTION

(able to measure up to $2000\ \text{T}\Omega$) ; to be ordered with ref.
SY5000-M1501P

SY5000-DESKTOP

Desktop PC, display, inkjet printer, Windows™ XP PRO



SY5000-LAPTOP

Laptop PC, inkjet printer, Windows™ XP PRO



SY5000-RACK PC1

Rackable industrial PC, external display, external keyboard;
inkjet printer, Windows™ XP PRO



SY5000-RACK PC2

Rackable industrial PC, external display, rackable industrial
keyboard; inkjet printer, Windows™ XP PRO



SY5000-RACK PC3

Rackable industrial PC, rackable industrial display, rackable
industrial keyboard; inkjet printer, Windows™ XP PRO



High Voltage Cable testers

SYNOR 5000R

OPTIONAL FRONT PANEL CONNECTOR OUTPUTS

STANDARD OUTPUTS

All our testers are delivered with DIN41612 connector types, per default.



If the application requires stronger type of connector, zero insertion force connectors, military type connectors, ... then see below some typical connector front panel outputs.

Sefelec customizes the connector outputs as required.



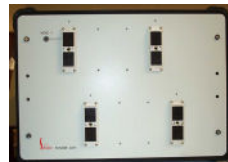
SY5000-HAN

Harting 64 pts, 128 pts, ... connector type is popular for railway industry or any other type of environment where test conditions need rough connexions



SY5000-ITTC

ITT CANNON 264 pts, ... connector type is popular for aeronautic industry or any other type of environment when one need to connect a big quantity of points at the same time



SY5000-EDAC

EDAC 56 or 120 pts, ... connector type is popular for Aeronautic, military industry or any other type of environment when one need cheap and locable connectors



SY5000-OTTY

Any configuration for the connector outputs is possible ; just supply Sefelec with your specifications or leave us guide you on your requirement and our experience



High Voltage Cable testers SYNOR 5000R

AVAILABLE ACCESSORIES

SY5000-LIGHTS

Red-Green lamp to indicate the high voltage presence



KRXS

19" rack mounting adaptation kit



SY5000-PROBE (standard accessory, automatically delivered with new equipment)

Touch probe, useful for debugging & manual testing



CALIBRATION

SY5000-CAL

Synor series automatic calibration kit

