



[netally.com](http://netally.com)

Network Test, Analysis,  
& Cybersecurity Solutions



# Testing you can trust, from a reliable ally.

Our family of innovative network test solutions have been helping network engineers and technicians better deploy, manage, and maintain today's complex wired and wireless networks for decades.

For more than 25 years, we have been the #1 ally of network professionals worldwide. We began by making the world's first handheld network analyzer – the LANMeter® – and have continued as industry pacesetters ever since, setting the standard for portable network testing.

When it comes to innovative, reliable, best-in-class portable network testing solutions, NetAlly is the name to trust. Our leading-edge, highly responsive tools get the job done fast by...

- Simplifying the complexities of network testing
- Providing instant visibility for efficient problem solving
- Enabling seamless collaboration between site personnel and remote experts



simplicity



visibility



collaboration

## AirMapper™ Ecosystem

### **COST-EFFECTIVE WI-FI DESIGN, SITE SURVEY & TROUBLESHOOTING SOLUTION**

The AirMapper Ecosystem is a suite of interoperable products that speed and simplify wired and Wi-Fi network planning, installation, validation, and troubleshooting.

NetAlly is the first to offer site survey data collection and network discovery in powerful handheld instruments, with complete infrastructure and heat mapping in the Link-Live™ collaboration, reporting, and analysis platform or AirMagnet™ Survey PRO.

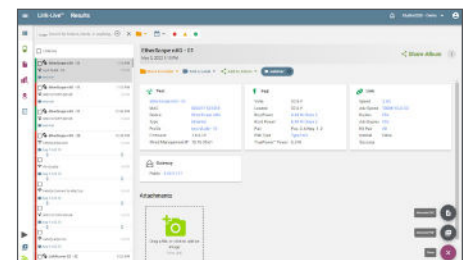
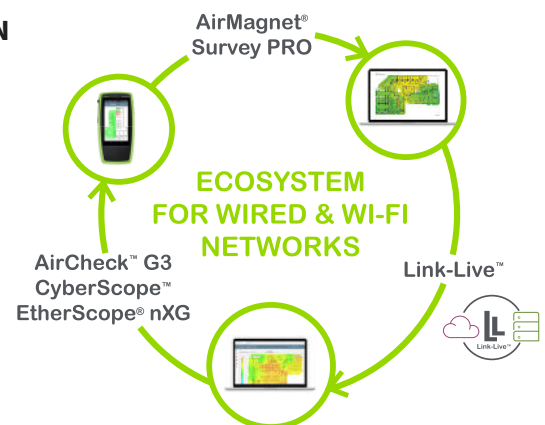
With the AirMapper Ecosystem, your team can design a Wi-Fi network with AirMagnet Survey PRO, quickly perform a validation site survey using the AirMapper app on the AirCheck™ G3, CyberScope™, EtherScope® nXG, and easily collaborate through the use of Link-Live.

### **WHAT IS LINK-LIVE™?**

Maintaining and coordinating a team of professionals to tackle Wi-Fi and wired network installation and management grows more challenging every day.

Available as a free cloud service or licensed private cloud/on-premise deployment, the Link-Live collaboration, reporting, and analysis platform transforms team workflows, allowing IT professionals to quickly and easily log, document, and report test activity from all NetAlly hand-held network testers and analyzers, enabling collaboration across your entire team.

- Available as a free cloud service or Link-Live Private Edition for licensed on premise or private cloud deployment
- Easily unify results, reporting, and data management in a secure cloud portal
- Better manage jobs, improve staff efficiency, and facilitate team collaboration



**MODELS:** LL-PRVT-G (software download)  
LL-PRVT-SUM (annual subscription)



## CYBERSCOPE™

### HANDHELD CYBERSECURITY ANALYZER



CyberScope offers comprehensive cyber security risk assessment, analysis, and reporting for the site access layer in a single, powerful, portable tool – including network discovery, wireless security, vulnerability assessment (Nmap), plus segmentation and provisioning validation. It provides fast, actionable insights into your site networks, filling the critical visibility gaps that other cybersecurity tools frequently do not address.

- Native support for NBASE-T, 1G/10G Ethernet, Wi-Fi 6E, Bluetooth/BLE and RF spectrum analysis (2.4/5 GHz)
- Combines scanning and active probing using multiple technologies to audit endpoints and infrastructure elements
- Validates connectivity and critical services, plus supports 10G line-rate throughput testing and packet captures
- Integrates network topology mapping plus AirMapper Site Survey for Wi-Fi and Bluetooth/BLE
- Leverages the power of Nmap for endpoint assessment and vulnerability detection to help identify internal threat vectors



**MODELS:**  
CYBERSCOPE-CE  
CYBERSCOPE-CE-E

#### Cybersecurity Assessment Workflow - Simplified with Cyberscope

Complete visibility. It's what you need but despite all the resources you have, there are still potential site vulnerability gaps. Ensuring security is paramount. CyberScope can help.



DISCOVER



IDENTIFY



LOCATE



ANALYZE



REPORT

Discovery (7/230)		
2	Device Type	
Studio-mgmt-network	10.76.30.100	
Switch	Cisco-767be7	
127.0.1.1	127.0.1.1	
Switch		
MS510TXPP-SW-05	10.76.30.5	
Router	Netgear-6d7320	
MS510TXPP-SW-04	10.76.30.4	
Router	Netgear-757141	
MS510TXPP-SW-02	10.76.30.2	
Router	Netgear-70731c	
COS-IT-STUDIO.NetAlly...	10.76.10.1	
Router	Cisco-a90805	
172.24.254.38	172.24.254.38	
Router		

Discovery Device List

For more information visit [cyberscope.netally.com](https://cyberscope.netally.com)

## Need support? We're here for you.

NetAlly's Customer Experience & Solutions Center is here to help you solve any product problems you encounter – from the simplest to the most complex. Our goal is to make sure you get the best results using our products and have a superior customer experience.

We're here to:

- Coach you through various aspects of product usage
- Quickly resolve your product issues to minimize downtime
- Serve as your technical advocate, drawing from experts across NetAlly to get you fast answers

**TOLL-FREE (NORTH AMERICA) 1-844-878-2559**  
**INTERNATIONAL +1-719-755-0770**



## FEATURED PRODUCTS

### EtherScope® nXG

#### PORTABLE NETWORK EXPERT

Deploying and maintaining Wi-Fi 6/6E and wired network infrastructure without the right tools can be daunting... and costly. This multi-technology, all-in-one handheld network analyzer enables engineers and technicians to get more done faster in today's constantly changing Wi-Fi and Ethernet access networks.

- A lightweight, handheld, multi-function instrument that's perfect for remote site validation and troubleshooting
- Eliminate the need to purchase multiple testers or carry a fragile laptop PC or tablet
- Android™ apps make the user's workflow more efficient. Go beyond testing (check trouble tickets, run speed tests, configure networked devices, etc.)
- Optional NXT-1000 spectrum analyzer offers a comprehensive view of RF interference
- Upload discovery data to Link-Live and instantly map your wired and Wi-Fi networks; speeds troubleshooting and keeps network documentation up-to-date; exports to Visio

Android is a trademark of Google, LLC



#### MODELS:

EXG-300 • EXG-300-KIT  
EXG-300-KIT-2PK  
EXG-300-LR10G2-KIT

### AirCheck™ G3

#### WI-FI 6 WIRELESS ANALYZER

Intuitive user interface delivers actionable intelligence, speeding and simplifying Wi-Fi 6 deployment, troubleshooting, surveying, and validation. AirCheck G3 provides network professionals of any skill level with complete and accurate information to survey and validate Wi-Fi deployments and changes, resolve connectivity and performance problems quickly, speed up closure of trouble tickets and ensure your Wi-Fi network meets end users' needs.

- Native Wi-Fi 6, 2.4/5/6GHz band, and Bluetooth/BLE support
- Validate Wi-Fi 6/6E network performance for critical services and key end devices
- Quickly test, verify, troubleshoot, and map Wi-Fi networks
- Faster and easier Wi-Fi and Bluetooth/BLE site surveys with AirMapper™ Site Survey app
- Quickly find the physical location of Wi-Fi access points and clients on the 2.4GHz, 5GHz, and 6GHz bands



#### MODELS:

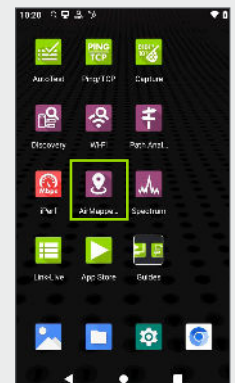
AIRCHECK-G3-PRO  
AIRCHECK-G3-PRO-KT  
AIRCHECK-G3-PRO-TKT

## FEATURED APP

### AirMapper™ Site Survey App

The AirMapper Site Survey app for the AirCheck G3, EtherScope nXG and CyberScope lets you quickly and easily gather location-based Wi-Fi measurements and create visual heat maps of key performance metrics in Link-Live™ or AirMagnet® Survey PRO.

- Conduct quick Wi-Fi 6E and Bluetooth/BLE site surveys of new or existing deployments, change validation, and performance verification
- Perform enterprise-grade site surveys without a dongle or tethered device
- View professional SNR and noise measurements
- Gain insights into user experience to avoid performance complaints and costly Wi-Fi network re-design



AirMapper Site Survey App

## LinkRunner® 10G

### ADVANCED ETHERNET TESTER

With network bandwidth demands increasing, gaining visibility into choke points, latency, and packet loss issues is more important than ever. Quickly test, verify, and troubleshoot line-rate 1Gig, Multi-Gig and 10Gig Ethernet with our cost-effective, handheld, multi-function tester.

- Delivers complete network validation, troubleshooting, and documentation; accelerates deployments, and speeds problem identification
- (2) LinkRunner 10G units can be used for LANBERT™ Media Qualification testing or for line-rate bandwidth performance testing to prove network capacity, performance and QoS, as well as service provider SLAs between sites
- AllyCare enables in-depth network discovery, mapping, and web remote control
- Line-rate capture up to 10Gbps ensures you never miss a packet for in-depth analysis
- Optional USB Wi-Fi adapter enables instant upload of test results to Link-Live and remote control



#### MODELS:

LR10G-200 • LR10G-200-KIT  
EXG-300-LR10G2-KIT

## LinkRunner® G2

### ENHANCED SMART NETWORK TESTER

This enhanced network diagnostic tester simplifies network validation and configuration of copper and fiber Ethernet networks, streamlining workflows by combining essential functions of installation and triage in a single, ruggedized unit.

- Automates hardware tests for Power over Ethernet (PoE), cable, VLAN, and link speed that would be difficult to conduct using laptops or mobile phones
- Improves the efficiency and effectiveness of network operations by accelerating network deployment and problem identification
- Intuitive design runs Android-based apps with smartphone-like features, empowering onsite teams to get networks up and running quickly



#### MODELS:

LR-G2 • LR-G2-KIT  
LR-G2-LS-KIT

## LinkRunner® AT

### COPPER AND FIBER AUTOTESTER

When network issues arise or problems installing a new device occur, time is of the essence. Our AutoTester tests and validates copper and fiber Ethernet connectivity in less than 10 seconds, so you can pinpoint the source of the problem fast.

- User-configured Auto Tests simplify a wide range of important tasks
- Quick cable test and switch identification facilitates fast problem isolation
- Test results can be automatically uploaded to the Link-Live reporting and analysis platform improving collaboration between network engineers and technicians
- Creates greater job visibility, project control, and fleet management



#### MODELS:

LRAT-1000 • LRAT-2000  
LRAT-2000-KIT

## LinkSprinter®

### 10-SECOND POCKET NETWORK TESTER

Connectivity issues can be a major source of frustration for end users, putting you in the hot seat. This easy-to-use pocket network tester is ideal for frontline and help desk staff, offering a simple network connectivity test for copper Ethernet links, identifying errors and validating links in less than 10 seconds.

- Reveal network connectivity status and port information, while ensuring documentation for every link
- Measure PoE voltage, perform a switch test, and confirm that the DHCP server is running and responsive through the one-button AutoTest
- View detailed test results on your mobile device over built-in Wi-Fi hotspot
- Test results can be automatically uploaded to the Link-Live reporting and analysis platform improving collaboration between network engineers and frontline technicians



**MODELS:**  
LSPRNTR-300  
LSPRNTR-300-5PK  
LSPRNTR-300-10PK

## Test Accessory

### POCKET IPERF SERVER

Validating throughput of your network is essential, and if done proactively can reveal the underlying issues that cause user complaints. Quickly and easily verify performance on any part of your network with our rugged, pocket-sized iPerf server, even when you have limited access to the infrastructure. Conducts some of the same network port tests as LinkSprinter and uploads test results to Link-Live™.

- Easily validate and troubleshoot network performance
- Eliminate the hassle of configuring an iPerf server
- Conveniently powered via PoE or AA batteries



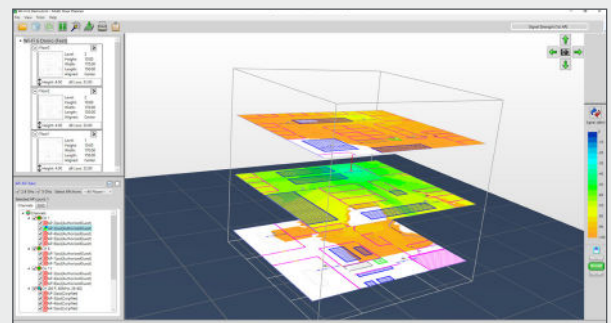
**MODELS:**  
TEST-ACC  
TEST-ACC-5PK  
TEST-ACC-10PK

## AirMagnet® Survey PRO

### WIRELESS DESIGN & SITE SURVEY ANALYSIS SOFTWARE

Unreliable techniques for designing and surveying Wi-Fi networks can lead to costly redesigns, user complaints and satisfaction issues. Predictively model Wi-Fi 6/6E network changes or design a new network for optimal coverage, connectivity, and performance with this comprehensive wireless design and site survey analysis software.

- Predictively model Wi-Fi 6/6E network changes or design a new network without physically rolling out APs
- Collect real-world data by performing true end-user experience measurements using AirMapper Site Survey on the AirCheck™ G3, CyberScope™, and EtherScope® nXG
- Generate heatmaps that provide full visibility of WLAN coverage, noise, SNR, interference, throughput, data rates, retries, loss, and more on the 2.4GHz, 5GHz or 6GHz bands
- Save time by performing active and passive surveys in a single walk-through
- Easily customizable templates provide users with flexibility by allowing the creation of various professional reports



**MODELS:** AM/B4010G • AM/A4012G  
AM/A4016G • AM/A4018G



## AllyCare Premium Support Services

AllyCare is a comprehensive support and maintenance service for NetAlly's network tools and AirMagnet® software that offers significant value over standard warranty. By maintaining your AllyCare membership throughout the life of your product you can ensure your NetAlly handheld network tester or AirMagnet software is kept up to date with the latest features and functionality.

AllyCare can be purchased as either a 1-year, 2-year, or a value-added 3-year membership.



### MEMBERSHIP BENEFITS\*

Support Features	with AllyCare Support	Standard Warranty
Latest Software & Firmware Updates	Yes	90-day manufacturing defects only
Repair Service Covered*	Yes	1-year manufacturing defects only
Accessory Replacements*	Yes	90-day manufacturing defects only
AllyCare-Enabled Product Features (See below)	Yes	No
Exclusive Online Product Tutorials	Yes	No
Priority access to a Customer Experience & Solutions expert	Warranty support, plus priority product functionality and issue troubleshooting	License, installation, registration, application launch and warranty repairs only

AllyCare-Enabled Product Feature	NetAlly Products	With AllyCare	Without AllyCare
<b>Advanced Survey Heatmaps in Link-Live™</b> - Get access to additional heatmaps: Noise, SNR, Adjacent Channel Interference, Co-Channel Interference, AP Coverage, Min Basic Rate, Beacon Overhead, Max TX/Rx rates, Max Tx/Rx MCS.	AirCheck® G3 CyberScope™ EtherScope® nXG	Yes	No
<b>Advanced Heatmap Filters in Link-Live</b> - Get access to additional filtering options: APs, Authorization Class, Band, BSSIDs, Channels, Channel Width, Min Basic Rates, Security, and Type.	AirCheck G3 CyberScope EtherScope nXG	Yes	No
<b>Cloud-Based Remote Control</b> - Simple and secure remote-control that allows you to connect from Link-Live™ directly to your network-connected AllyCare-enabled product (requires internet access).	AirCheck G3 CyberScope EtherScope nXG LinkRunner® 10G	Yes	No
<b>Advanced Topology Mapping in Link-Live</b> - Get access to detailed map controls, filtering, and advanced reporting options.	AirCheck G3 CyberScope EtherScope nXG LinkRunner 10G	Yes	No
<b>Advanced Tester Functionality</b> - Get access to additional app functionality in your tester: Network Discovery, Switch Management, Device Discovery, Topology/Path Analysis.	LinkRunner 10G	Yes	No

**\*AllyCare Restrictions** (See *Support Services Terms & Conditions* for complete coverage and limitations at: [www.netally.com/term-of-use](http://www.netally.com/term-of-use))

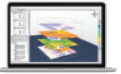
- Any product purchased from unauthorized third-parties (e.g., online auction site, end-users, aftermarket users, etc.) will not qualify for nor will receive AllyCare support. Also excluded are products that have been used and then resold.
- Repairs require prior qualification troubleshooting by our Customer Experience & Solutions Center. Damage covered is from normal wear and does not cover accidental product damage or loss. Accessories covered are those included with the original product purchase.
- Products that are sold with 1-year AllyCare Support included have certain features and capabilities enabled. At the end of your existing contract, you must renew your AllyCare Support contract to continue utilizing the enabled features.
- AllyCare membership may not be available in all countries. Please confirm with your NetAlly representative before purchasing.

For more information visit [netally.com/allycare-support](http://netally.com/allycare-support)

# PRODUCT SELECTION GUIDE

Security  
Operations /  
MSSPs

Network Operations / MSPs



Product / Feature	CyberScope	LinkSprinter	Test Accessory	LinkRunner AT	LinkRunner G2	LinkRunner 10G	EtherScope nXG	AirCheck G3	AirMagnet Survey PRO
Ethernet Copper	10/100 Mbps & 1/2.5/5/10 Gbps	10/100/1000 Mbps				10/100 Mbps & 1/2.5/5/10 Gbps			
Ethernet Fiber	1/10 Gbps			1 Gbps		1/10 Gbps			
PoE Test	Up to 90W	Voltage only		Up to 30W	Up to 90W				
Wiremap & Toner - Cable Open/Short/Length	•			•	•	•	•		
Default Gateway, DNS, IP	Unlimited Targets	1 IP Target	1 IP Target	10 IP Target	Unlimited Targets				
WiFi Test/Heatmaps 802.11 a/b/g/n/ac/ax, Bands (2.4, 5, 6GHz)	•						•	•	•
WiFi Connection & Roaming Test	•						•	•	•
Discover SSID, AP, & Clients	•						•	•	•
AirWISE® Intelligence	•						•	•	•
AP and Client Locate	•						•	•	AP Locate Only
RF Traffic Statistics	•						•	•	
AirMapper™ Site Survey <sup>1</sup>	•						•	•	•
Bluetooth/BLE Site Survey	•						•	•	
Wi-Fi Spectrum Analysis	Optional NXT-1000						Optional NXT-1000		
Network Topology Mapping <sup>1</sup>	•					•	•	•	
Network Discovery <sup>1</sup>	•					•	•	•	
Packet Capture	•				•	•	•	•	
LANBERT™ Media Qualification	•					•	•		
iPerf Performance Test	•		•			•	•	•	•
Line Rate Performance Test	10 Gbps					10 Gbps	10 Gbps		
Remote View/Control <sup>1</sup>	•				Android Apps	•	•	•	Windows Apps
Integration of Nmap into AutoTest & Network Discovery	•								
Standalone Nmap App / Custom Script Support	•								
Option to Disable Functionality*	•								

<sup>1</sup>AirMapper enhanced site survey visualizations, Network Topology Mapping, Network Discovery, and Remote View/Control are available to customers with AllyCare support

\*CyberScope allows disabling of specific product capabilities for use in secure environments

